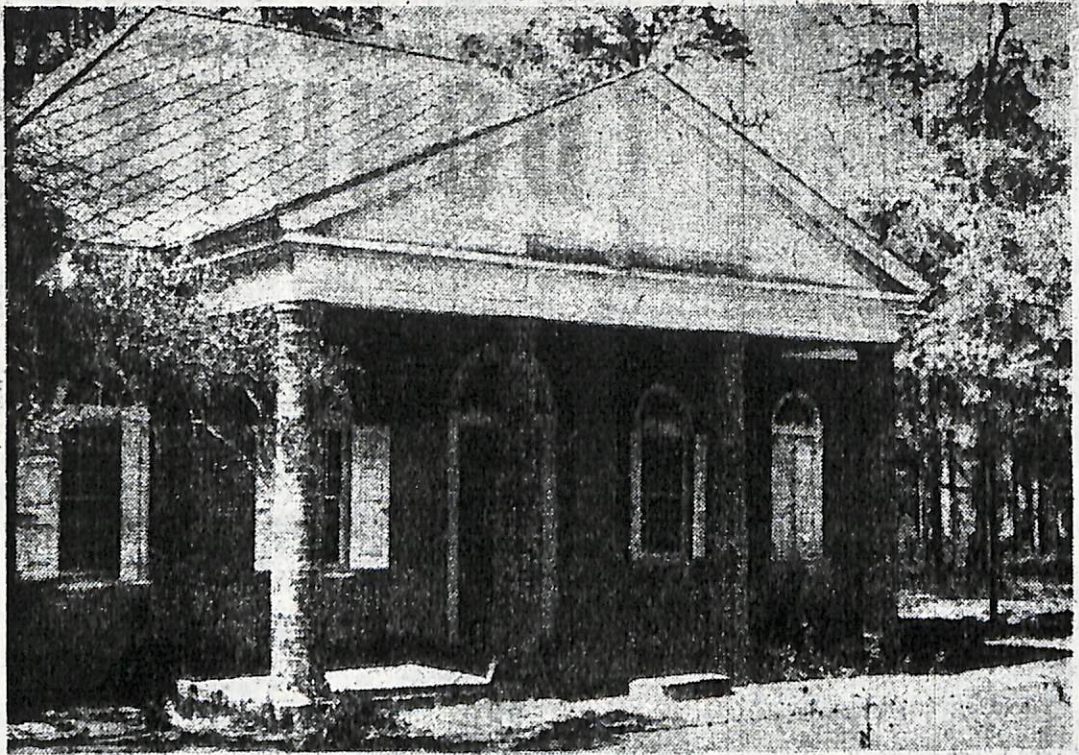


Do You Know Your South Carolina?



Parish Church Stands On Ancient Kings' Highway

St. James, Santee, Parish Has Served Lowcountry Since 1706

By HARRIETT G. LOFTON
A Special Writer

McCLELLANVILLE.

The Parish Church of St. James, Santee, stands on the old King's Highway, which was the direct route from Georgetown to Charleston for many years. This stately old church, with its rounded brick columns, comes suddenly into view as one travels the old road.

The establishment of this parish, as a parish of the Church of England in the Province of South Carolina, was authorized by act of Assembly, April 9, 1706. Thus, this parish is the oldest in the diocese next to St. Philip's. For this reason every year when the Diocesan Convention meets, the church

built in the parish. The church at Echaw became the chapel of ease.

The old parish church at Wambaw is rectangular in shape, with porticos north and south, featuring rounded brick columns. The one on the north in 1847 was partly enclosed with brick matching the church, for the purpose of making a vestry room. A door opens on the west, entering on a long aisle leading to a window in the east. This was the window of the original chancel. The chancel was destroyed during the Civil War by Northern soldiers. The church had to be closed for services until it could be repaired. It must have been at this time that the chancel was placed where it is now—on the

at the chapel all during the year since 1912.

The first minister of St. James, Santee, the Rev. Pierre Robert, and his successor the Rev. Philip de Richbourg, were noted for love and devotion to their people. They were succeeded by others through the years. In 1756 the Rev. Samuel Fenner Warren was sent over from England and was at once elected rector of St. James, Santee.

He arrived in the parish, June 4, 1768. His long and faithful service terminated only with his death in March, 1789. During his rectorship he continued to live at the Echaw Rectory, serving the chapel there and the present church. He